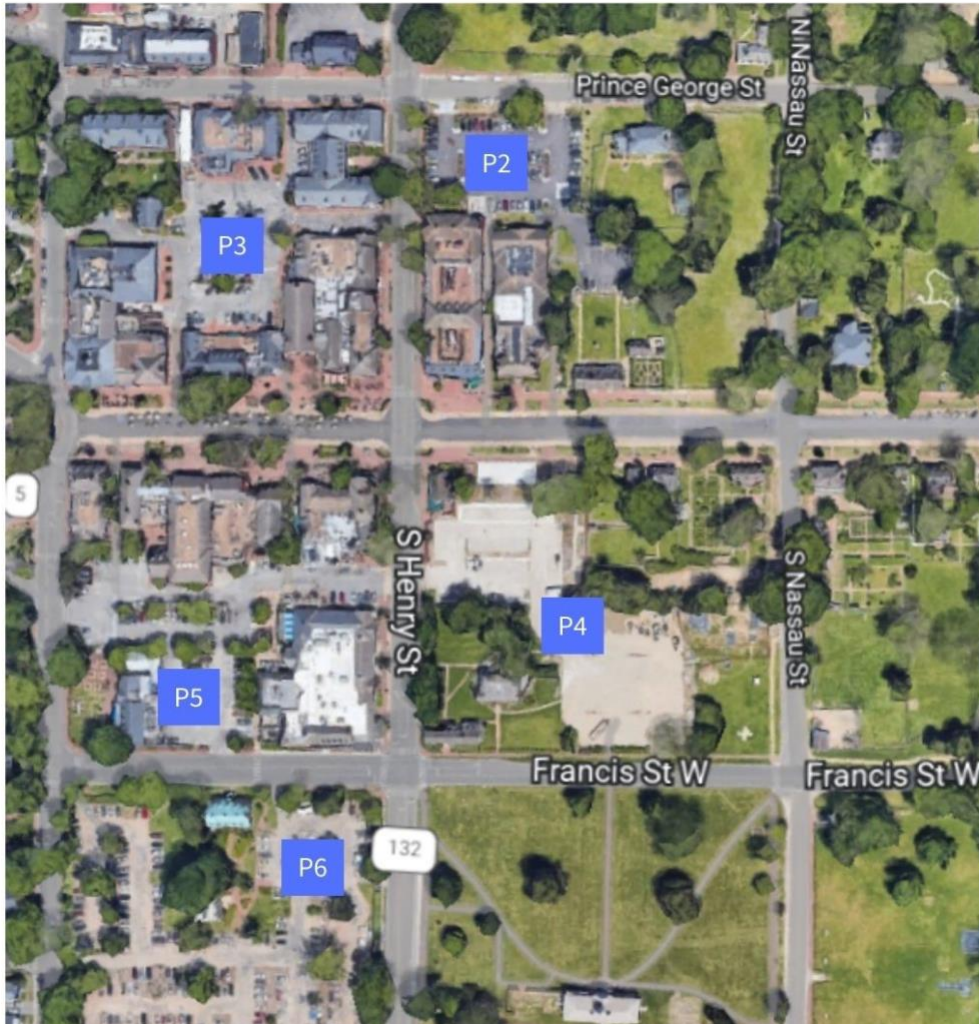


## FAQs – Colonial Williamsburg Parking

### What public parking lots are managed by Colonial Williamsburg?

This map shows the locations of Colonial Williamsburg’s P2-P6 parking lots.



### How do I pay the parking fees?

Payment can be made either through the [Passport Parking](#) app available for download on mobile devices or through parking kiosks installed in the P2-P6 parking lots (one kiosk in each lot).

### Who should I contact if the Passport app is not working?

Pay station kiosks situated in each parking lot offer an alternative to the app if it is not working properly. Users will not be responsible for payment at Colonial Williamsburg’s parking lots if both systems are down.

### Who collects parking fees?

The Colonial Williamsburg Foundation collects parking fees for parking lots P2-P6 and for hospitality lots located at The Williamsburg Inn, The Williamsburg Lodge, the taverns, and behind Christiana Campbells. The city collects parking fees from the P1 parking garage.

**What are the paid parking hours?**

Parking hours are from 10 a.m. – 10 p.m. daily.

**Are free lots available if I don't want to pay a parking fee?**

Colonial Williamsburg ticketed guests get free unlimited use of the Colonial Williamsburg shuttle. The Art Museums parking lot also offers free parking for ticketed guests. Additionally, a few blocks in the downtown area have free on-street parking spaces (e.g., Boundary Street, Scotland Street and Prince George Street). Most of these spaces are limited to one hour parking.